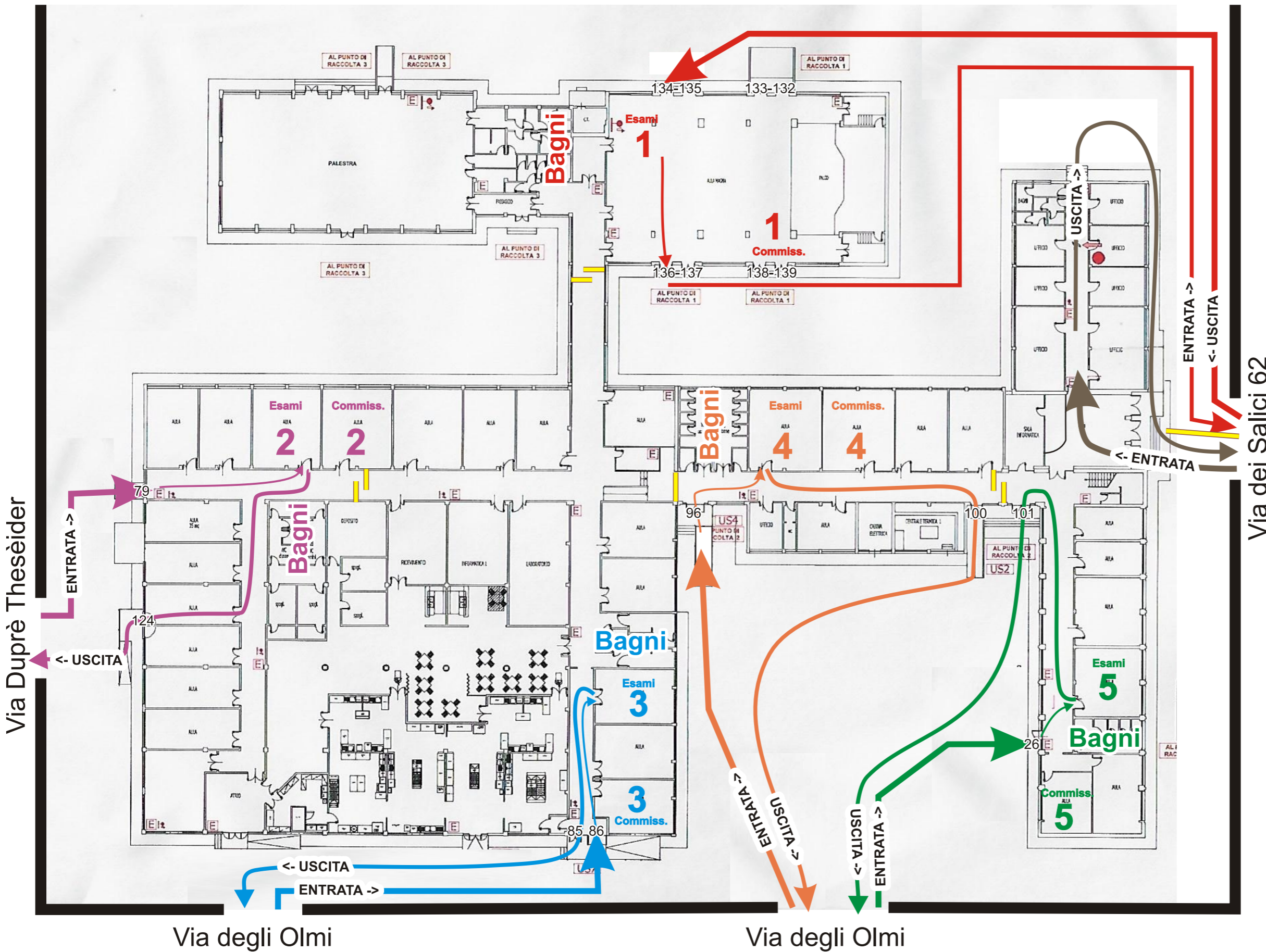


# DISPOSIZIONE - COMMISSIONI DI ESAME



**1<sup>a</sup> COMMISSIONE**  
**RIIP06001**  
 SALA E VENDITA  
**5G - 5H**

**2<sup>a</sup> COMMISSIONE**  
**RIIP07001**  
 ACCOGLIENZA TURISTICA  
**5F - 5L**

**3<sup>a</sup> COMMISSIONE**  
**RIIPEN001**  
 ENOGASTRONOMIA  
**5A - 5D**

**4<sup>a</sup> COMMISSIONE**  
**RIIPEN002**  
 ENOGASTRONOMIA  
**5B - 5C**

**5<sup>a</sup> COMMISSIONE**  
**RIIPPD001**  
 PASTICCERIA  
**5E**

**SBARRAMENTO**  
**COVID**